



ISO 9001:2015
Certified Company



MECHANICAL SEALS

VERSATILE | INTERCHANGEABLE | ECONOMICAL



www.singhflotek.com



ABOUT US

OUR Heritage

We take this opportunity to inform you that we, a Singh FLO-TEK is a leading manufacturer of all types of mechanical seals, Shafts, sleeves, Spare's of seals, Gland plates, packing rings, Door gaskets & Rotary Joints Etc. which are very versatile, economical & interchangeable.

Singh FLO-TEK Industry manufactures a wide range of mechanical shaft seals backed by over one decade of experience & expertise in sealing technology. We manufacture highly efficient & reliable mechanical seals, Shaft, Sleeve & Gland plates for All type's of Pumps, (Turbine, Multi stage, Centrifugal, Gears, Vacuum & Hot oil Etc) Compressors, Mixers, Agitators, Reactors, Autoclaves, Dyeing machines & other rotary equipment having rotating shafts.

Our mechanical seals are serving the needs of chemical processing, petrochemical processing, oil & natural gas, Fertilizer, solvent extraction, power generation, textile processing and other industries. We are also changing the gland pump's into the mechanical seals pump's as per party requirement.

The reliability and wide experience puts us a shade better than our competitors in providing solutions to Sealing Problem. We would be too happy to be associated with you & request you to kindly oblige us by including our name as an approved vendor of mechanical Seals.

Today we have the strength of a team of committed Engineers techno crafts backed by one of the most modern manufacturing facilities of its kind. Our production & Quality control specialists continuously inspect products, components, assemblies & machine tool operations on production floor, critical parts gets special attention to ensure that they meet the closest engineering tolerances. These stringent procedures guarantee mechanical seals of reliability & efficiency.

We feel every application deserves, its own optimal solution. That's why we have developed the widest range of rotary union and syphons. There is a 'Singh FLO-TEK' product to meet almost every application. Whatever the process, speed, medium or other application conditions. We offer self supported, rod supported and bracket mounted rotary union for steam, cooling water, hot oil, air, gases and other media. Stationary syphon system for all speed ranges and other accessories.

OUR Vision & Mission

Our mission is to deliver value to our customers experience that surpasses expectation and truly redefines what the world expects from their sealing specialist.

We are dedicated to creating a unique business policy that achieves success for our customers this doing with integrity, respect and full-deep commitment to provide consistently excellent performance in sealing solutions.

CARTIAGE MECHANICAL SEAL



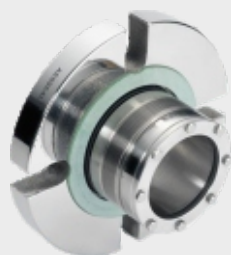
SCX 10 SERIES

Operating Parameters

Sizes : 25 to 100 mm
 Pressure : 40 bar
 Temperature : -40 C to 300 C
 Speed : 25 m/s

Material of Construction

Rotary Face : Sintered SIC, TC
 Stationary Face : Sintered SIC, Carbon, TC
 Elastomers : FKM/FFKM, TTV, Aflas, EPM
 Metal Parts : SS316, Alloy-C 276, Ni
 Spring – SS 316, Alloy -C 276



SCX 20 SERIES

Operating Parameters

Sizes : 25 to 100 mm
 Pressure : 10 bar
 Temperature : -40 C to 400 C
 Speed : 20 m/s

Material of Construction

Rotary Face : AB Carbon, Sintered SIC, TC
 Stationary Face : Sintered SIC, Carbon, TC
 Elastomers : FKM/FFKM/Grafoil
 Metal Parts : SS316, Alloy-C 276, 718 Inconel



SDX 10 SERIES

Operating Parameters

Sizes : 25 to 120 mm
 Pressure : 20 bar
 Temperature : -55 C to 300 C
 Speed : 20 m/s

Material of Construction

Rotary Face : Carbon, Sintered SIC
 Stationary Face : Sintered SIC, TC
 Elastomers : FKM/FFKM
 Metal Parts : SS316, Alloy-C 276, 718 Inconel
 Spring : SS 316, Alloy-C 276



SDX 20 SERIES

Operating Parameters

Sizes : 25 to 100 mm
 Pressure : 25 bar
 Temperature : -40 C to 300 C
 Speed : 20 m/s

Material of Construction

Rotary Face : Carbon, Sintered SIC
 Stationary Face : Sintered SIC, TC
 Elastomers : FKM/FFKM
 Metal Parts : SS316, Alloy-C 276, 718 Inconel
 Spring : SS 316, Alloy-C 276

CARTIAGE MECHANICAL SEAL



SDX 30 SERIES

Operating Parameters

Sizes : 25 to 120 mm
 Pressure : 25 bar
 Temperature : -40 C to 300 C
 Speed : 20 m/s

Material of Construction

Rotary Face : Carbon, Sintered SIC
 Stationary Face : Sintered SIC, TC
 Elastomers : FKM/FFKM
 Metal Parts : SS316, Alloy-C 276, 718 Inconel
 Spring : SS 316, Alloy-C 276



SDX 40 SERIES

Operating Parameters

Sizes : 25 to 80 mm
 Pressure : 15 bar
 Temperature : -50 C to 300 C
 Speed : 15 m/s

Material of Construction

Rotary Face : Carbon, Sintered SIC
 Stationary Face : Sintered SIC
 Elastomers : FKM/FFKM
 Metal Parts : SS316, Alloy-C 276
 Spring : SS 316, Alloy-C 276

AGITATOR/ REACTOR SEALS



SA 100 SERIES

Operating Parameters

Sizes : 25 to 300 mm
 Pressure : 10 bar
 Temperature : -25 C to 300 C
 Speed : 5 m/s

Material of Construction

Rotary Face : Carbon, Sintered SIC
 Stationary Face : Sintered SIC, TC
 Elastomers : FKM/FFKM/TTV/AFLAS
 Metal Parts : SS316, Alloy-C 276
 Spring : SS 316, Alloy-C 276



SA 200 SERIES

Operating Parameters

Sizes : 25 to 300 mm
 Pressure : 10 bar
 Temperature : -25 C to 300 C
 Speed : 5 m/s

Material of Construction

Rotary Face : Carbon, Sintered SIC
 Stationary Face : Sintered SIC, TC
 Elastomers : FKM/FFKM/TTV/AFLAS
 Metal Parts : SS316, Alloy-C 276
 Spring : SS 316, Alloy-C 276

AGITATOR/ REACTOR SEALS



SA 300 SERIES

Operating Parameters

Sizes : 40 to 400 mm
 Pressure : 10 bar
 Temperature : -25 C to 300 C
 Speed : 15 m/s

Material of Construction

Rotary Face : Carbon, Sintered SIC
 Stationary Face : Sintered SIC,TC
 Elastomers : FKM/FFKM/TTV/AFLAS
 Metal Parts : SS316, Alloy-C 276
 Spring : SS 316, Alloy-C 276



SA 400 SERIES

Operating Parameters

Sizes : 40 to 400 mm
 Pressure : 10 bar
 Temperature : -25 C to 300 C
 Speed : 5 m/s

Material of Construction

Rotary Face : Carbon, Sintered SIC
 Stationary Face : Sintered SIC, TC
 Elastomers : FKM/FFKM/TTV/AFLAS
 Metal Parts : SS316, Alloy-C 276
 Spring : SS 316, Alloy-C 276



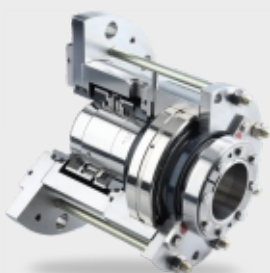
SA 500 SERIES

Operating Parameters

Sizes : 40 to 400 mm
 Pressure : 10 bar
 Temperature : -25 C to 300 C
 Speed : 5 m/s

Material of Construction

Rotary Face : Carbon, Sintered SIC
 Stationary Face : Sintered SIC, TC
 Elastomers : FKM/FFKM/AFLAS/TTV
 Metal Parts : SS316, Alloy-C 276
 Spring : SS 316, Alloy-C 276



SA 600 SERIES

Operating Parameters

Sizes : 40 to 400 mm
 Pressure : 25 bar
 Temperature : -25 C to 300 C
 Speed : 5 m/s

Material of Construction

Rotary Face : Carbon, Sintered SIC
 Stationary Face : Sintered SIC, TC
 Elastomers : FKM/FFKM/AFLAS/TTV
 Metal Parts : SS316, Alloy-C 276
 Spring : SS 316, Alloy-C 276

AGITATOR/ REACTOR SEALS



SA 700 SERIES

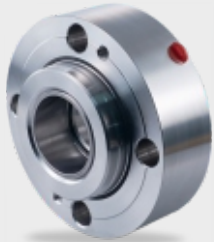
Operating Parameters

Sizes : 50 to 450 mm
 Pressure : 8 bar
 Temperature : -25 C to 300 C
 Speed : 2 m/s

Material of Construction

Rotary Face : Carbon, Sintered SIC
 Stationary Face : Sintered SIC, TC
 Elastomers : FKM/FFKM
 Metal Parts : SS316, Alloy-C 276
 Spring : SS 316, Alloy-C 276

API 682 SEALS



SFAP 1 SERIES

Balanced Single Inside Mounted, Cartilage Design
 Size : 25 to 120 mm
 Pressure : Vacuum to 45.00 bar (Max.)
 Temperature : -40 to 300 C
 Refinery, Petrochemical, Power Plant, Fertilizer



SFAP 2 SERIES

Balanced Dual unpressurized Cartilage
 Size : 25 to 120 mm
 Pressure : Vacuum to 20.00 bar (Max.)
 Temperature : -40 to 400 C
 Refinery, Petrochemical, Power Plant, Fertilizer



SFAP 3 SERIES

Balanced Dual pressurized Cartilage
 Size : 25 to 120 mm
 Pressure : Vacuum to 42.00 bar (Max.)
 Temperature : -40 to 300 C
 Refinery, Petrochemical, Power Plant, Fertilizer



SFAP 4 SERIES

Balanced Dual unpressurized Cartilage design
 Size : 25 to 120 mm
 Pressure : Vacuum to 42.00 bar (Max.)
 Temperature : -40 to 300 C
 Refinery, Petrochemical, Power Plant, Fertilizer

COMPONENTS SEALS



SF 400 SERIES

Operating Parameters
 Sizes : 18 to 100 mm
 Pressure : 6 bar
 Temperature : -25 C to 120 C
 Speed : 20 m/s



SF 500 SERIES

Operating Parameters
 Sizes : 15 to 120 mm
 Pressure : 10 bar
 Temperature : -25 C to 300 C
 Speed : 20 m/s



SF 800 SERIES

Operating Parameters
 Sizes : 35 to 100 m
 Pressure : 20 bar
 Temperature : -25 C to 450 C
 Speed : 20 m/s



SF 700 SERIES

Operating Parameters
 Sizes : 15 to 100 mm
 Pressure : 20 bar
 Temperature : -25 C to 300 C
 Speed : 20 m/s



SF 300 SERIES

Operating Parameters
 Sizes : 25 to 100 mm
 Pressure : 40 bar
 Temperature : -20 C to 180 C
 Speed : 13 m/s



SF 750 SERIES

Operating Parameters
 Sizes : 20 to 100 mm
 Pressure : 10 bar
 Temperature : -25 C to 300 C
 Speed : 20 m/s



SF 310 SERIES

Operating Parameters
 Sizes : 10 to 100 mm
 Pressure : 12 bar
 Temperature : -25 C to 180 C
 Speed : 20 m/s



SF 100 SERIES

Operating Parameters
 Sizes : 12 to 120 mm
 Pressure : 20 bar
 Temperature : -25 C to 300 C
 Speed : 20 m/s



SF 320 SERIES

Operating Parameters
 Sizes : 15 to 100 mm
 Pressure : 12 bar
 Temperature : -25 C to 180 C
 Speed : 20 m/s



SF 200 SERIES

Operating Parameters
 Sizes : 12 to 80 mm
 Pressure : 10 bar
 Temperature : -25 C to 300 C
 Speed : 20 m/s

INDUSTRIES SERVED



Mining



Pigments



Biotech



Water-Treatment



Pharmaceutical



Food



Oil-Gas



Chemical



Textile



Steel



Pulp and Paper



Petrochemical



Fertilizers



Refinery



Automobile




Power & Energy



SINGH FLO-TEK PVT. LTD.

 5-C, Dharam Kanta Road, Mujesar, Faridabad, Haryana – 121005

 0129 – 4892248 +91- 9810613425, 9582233425

 info@singhflotek.com info@singhseals.com

 www.singhflotek.com