



ISO 9001:2015  
Certified Company



# ROTARY JOINT



## OUR VALUES

Innovation, Teamwork, Commitment,  
Integrity, Customer Responsibility.

**VERSATILE**

**INTERCHANGEABLE**

**ECONOMICAL**



[www.singhflotek.com](http://www.singhflotek.com)





# ABOUT US

## OUR Heritage

We take this opportunity to inform you that our Singh Flo-Tek is a leading manufacturer of all types of mechanical seals, rotary union, spares of Rotary Joint/Union, Carbon Bushes, Elastomer packing rings, door gaskets, etc. which are very versatile, economical & interchangeable.

Singh Flo-Tek's manufacturer a wide range of rotary union backed by one decade of experience and expertise in sealing technology. We manufacture highly efficient and reliable rotary union for all type of Kneader, Mixers, ANFDs, SPM's, CNC's & VMC's, Calendar machine, etc.

Rotary union is a device used to transfer fluid under pressure or vacuum from a stationary inlet to a rotating outlet, preserving and isolating the fluid connection. If our inventory of standard products isn't a fit for your project, we can provide a custom-tailored rotary union solution designed to meet your exact application's requirements for operating performance, cost, and delivery.

The Rotary Union are serving the needs of textile, print and packaging, pulp and paper, automation, automobile, heavy machinery, energy, metal production, marine, machine tools and other industry. We also provide service and refurbishment of rotary union, and supply seal kit of other make eq. to Deublin, Kadant, Johnson Fluiten, Maier, etc. as per customer requirement.

Today we have the strength of a team of committed Engineers techno crafts backed by one of the most modern manufacturing facilities of its kind. Our production & Quality control specialists continuously inspect products, components, assemblies & machine tool operations on production floor, critical parts gets special attention to ensure that they meet the closest engineering tolerances. These stringent procedures guarantee Rotary union of reliability & efficiency.

We feel every application deserves, its own optimal solution. That's why we have developed the widest range of rotary union and syphons. There is a 'Singh FLO-TEK' product to meet almost every application. Whatever the process, speed, medium or other application conditions. We offer self supported, rod supported and bracket mounted rotary union for steam, cooling water, hot oil, air, gases and other media. Stationary syphon system for all speed ranges and other accessories.

## OUR Vision & Mission

Our mission is to deliver value to our customers experience that surpasses expectation and truly redefines what the world expects from their sealing specialist.

We are dedicated to creating a unique business policy that achieves success for our customers this doing with integrity, respect and full-deep commitment to provide consistently excellent performance in sealing solutions.

## STANDARD ROTARY UNION



**1000 SERIES**

### Specifications

Media Type : Water / Thermic Fluid Oil  
 Max. Speed : 750 – 3500 RPM  
 Max. pressure : 10 bar  
 Max. Temperature : 200 C  
 Connection Type : BSP/ NPT /Metric  
 Rotor Size : ¼ " to 2"

### Description

Single & Duo Flow Design  
 Balanced Mechanical Sealing  
 Brass/ CI Housing & Stainless Steel Shaft  
 Threaded & Flanged Joints



**2000 SERIES**

### Specifications

Media Type : Water / Thermic Fluid Oil  
 Max. Speed : 750 – 8000 RPM  
 Max. pressure : 20 bar  
 Max. Temperature : 250 C  
 Connection Type : BSP/ NPT /Metric  
 Rotor Size : ¼ " to 2"

### Description

Single & Duo Flow Design  
 Balanced Mechanical Sealing  
 Brass/ SS Housing & Stainless Steel Shaft  
 Threaded & Flanged Joints



**3000 SERIES**

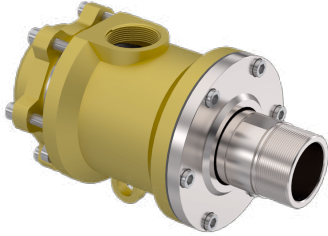
### Specifications

Media Type : Tap Water/ Glycol Water  
 Max. Speed : 750 – 3500 RPM  
 Max. pressure : 8 bar  
 Max. Temperature : 90 C  
 Connection Type : BSP/ NPT /Metric  
 Rotor Size : ¼ " to 2"

### Description

Single & Duo Flow Design  
 Balanced Mechanical Sealing  
 Brass/ CI Housing & Stainless Steel Shaft  
 Threaded & Flanged Joints

## STANDARD ROTARY UNION



**4000 SERIES**

### Specifications

Media Type : Hot Oil / Thermic Fluid Oil  
 Max. Speed : 20 – 100 RPM  
 Max. pressure : 8 bar  
 Max. Temperature : 300 C  
 Connection Type : BSP/ NPT /Metric  
 Rotor Size : 3/4 " to 2"

### Description

Single & Duo Flow Design  
 Carbon Graphite Sealing System  
 CI Housing & Stainless Steel Shaft  
 Threaded & Flanged Joints



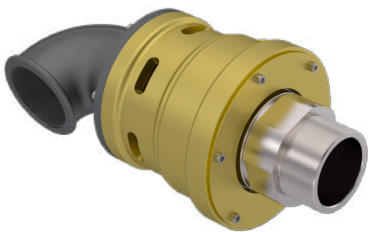
**5000 SERIES**

### Specifications

Media Type : Water / Hot Oil  
 Max. Speed : 200-3500 RPM  
 Max. pressure : 8 bar  
 Max. Temperature : 300 C  
 Connection Type : BSP/ NPT /Metric  
 Rotor Size : 3/4 " to 2"

### Description

Single & Duo Flow Design  
 Balanced Mechanical Sealing  
 Brass/ CI Housing & Stainless Steel Shaft  
 Threaded & Flanged Joints



**6000 SERIES**

### Specifications

Media Type : Water  
 Max. Speed : 750 RPM  
 Max. pressure : 15 bar  
 Max. Temperature : 90 C  
 Connection Type : BSP/ NPT /Metric  
 Rotor Size : 2 " to 4"

### Description

Single & Duo Flow Design  
 Balanced Mechanical Sealing  
 Brass/ CI Housing & Stainless Steel Shaft  
 Threaded & Flanged Joints

# HIGH PRESSURE ROTARY UNION



**SHP 100 SERIES**

**Specifications**

Media Type : Air / Hydraulic Oil  
 Max. Speed : 250 RPM  
 Max. pressure : 200 bar  
 Max. Temperature : 120 C  
 Connection Type : BSP/ NPT /Metric  
 Rotor Size : 1/4" to 3/4"

**Description**

Multi Flow Design  
 Balanced Mechanical Sealing  
 Al Housing & Stainless Steel Shaft  
 Teflon & Viton Sealing Parts  
 Chrome/ Ceramic Coated Sealing Surface



**SHP 200 SERIES**

**Specifications**

Media Type : Air / Vacuum / Hydraulic Oil  
 Max. Speed : 250 RPM  
 Max. pressure : 250 bar  
 Max. Temperature : 80 C  
 Connection Type : BSP/ NPT  
 Rotor Size : 1/4" to 3/4"  
 No. of Ports : 2- 16 ports

**Description**

Multi Flow Design  
 Balanced Mechanical Sealing  
 Al Housing & Stainless Steel Shaft  
 Teflon & Viton Sealing Parts  
 Chrome / Ceramic Coated Sealing Surface



**SHP 300 SERIES**

**Specifications**

Media Type : Air/ Vacuum / Hydraulic Oil  
 Max. Speed : 250 RPM  
 Max. pressure : 250 bar  
 Max. Temperature : 120 C  
 Connection Type : BSP/ NPT  
 Rotor Size : 1/4" to 1"  
 No. Of Ports : 2 – 16 Ports

**Description**

Multi Flow Design  
 Balanced Mechanical Sealing  
 Al Housing & Stainless Steel Shaft  
 Teflon & Viton Sealing Parts  
 Chrome / Ceramic Coated Sealing Surface

# MACHINE TOOL ROTARY UNION



**SMT 100 SERIES**

**Specifications**

Media Type : Glycol Water / Coolant  
 Max. Speed : 8000 RPM  
 Max. pressure : 25 bar  
 Max. Temperature : 120 C  
 Connection Type : BSP/ NPT /Metric  
 Rotor Size : ¼" to ¾" | M16 \* 1.5 LH/ RH

**Description**

For CNC Machines & SPM Machines  
 Easy Assembly & High RPM  
 Connections available in BSP/NPT/UNF/Metric  
 Silicon Carbide Sealing Parts



**SMT 200 SERIES**

**Specifications**

Media Type : Coolant  
 Max. Speed : 12000 RPM  
 Max. pressure : 25 bar  
 Max. Temperature : 120 C  
 Connection Type : BSP/ NPT /Metric  
 Rotor Size : M16 \* 1.5 LH/ RH

**Description**

For CNC Machines & VMC Machines  
 Easy Assembly & High RPM  
 Al Housing & Stainless Steel Shaft  
 Silicon Carbide Sealing Parts



**SMT 300 SERIES**

**Specifications**

Media Type : Coolant  
 Max. Speed : 12000 RPM  
 Max. pressure : 25 bar  
 Max. Temperature : 120 C  
 Connection Type : BSP/ NPT /Metric  
 Rotor Size : M16 \* 1.5 LH/ RH

**Description**

For CNC Machines & VMC Machines  
 Easy Assembly & High RPM  
 Al Housing & Stainless Steel Shaft  
 Silicon Carbide Sealing Parts

# MACHINE TOOL ROTARY UNION



**SMT 400 SERIES**

**Specifications**

Media Type : Coolant  
 Max. Speed : 20000 RPM  
 Max. pressure : 25 bar  
 Max. Temperature : 120 C  
 Connection Type : BSP/ NPT /Metric  
 Rotor Size : M16 \* 1.5 LH/ RH

**Description**

For CNC Machines & VMC Machines  
 Easy Assembly & High RPM  
 Al Housing & Stainless Steel Shaft  
 Silicon Carbide Sealing Parts



**SMT 500 SERIES**

**Specifications**

Media Type : Coolant  
 Max. Speed : 20000 RPM  
 Max. pressure : 25 bar  
 Max. Temperature : 120 C  
 Connection Type : BSP/ NPT /Metric  
 Rotor Size : M16 \* 1.5 LH/ RH

**Description**

For CNC Machines & VMC Machines  
 Easy Assembly & High RPM  
 Al Housing & Stainless Steel Shaft  
 Silicon Carbide Sealing Parts



**SMT 600 SERIES**

**Specifications**

Media Type : Coolant  
 Max. Speed : 8000 RPM  
 Max. pressure : 25 bar  
 Max. Temperature : 120 C  
 Connection Type : BSP/ NPT /Metric  
 Rotor Size : M16 \* 1.5 LH/ RH

**Description**

For CNC Machines & VMC Machines  
 Easy Assembly & High RPM  
 Al Housing & Stainless Steel Shaft  
 Silicon Carbide Sealing Parts

# INDUSTRIES SERVED



**Aerospace**



**Print & Packaging**



**Paper Mill**



**Alternate Energy**



**Defence**



**Factory Automation**



**Food and Beverage**



**Heavy Machinery**



**Machine Tool**



**Marine**



**Medical**



**Metal Production**



**Oil and Gas**



**injection molding machines**



**Semiconductor**



**Textile**



## SINGH FLO-TEK PVT. LTD.

- 5-C, Dharam Kanta Road, Mujesar, Faridabad, Haryana – 121005
- 0129 – 4892248 +91- 9810613425, 9582233425
- [info@singhflotek.com](mailto:info@singhflotek.com) [info@singhseals.com](mailto:info@singhseals.com)
- [www.singhflotek.com](http://www.singhflotek.com)